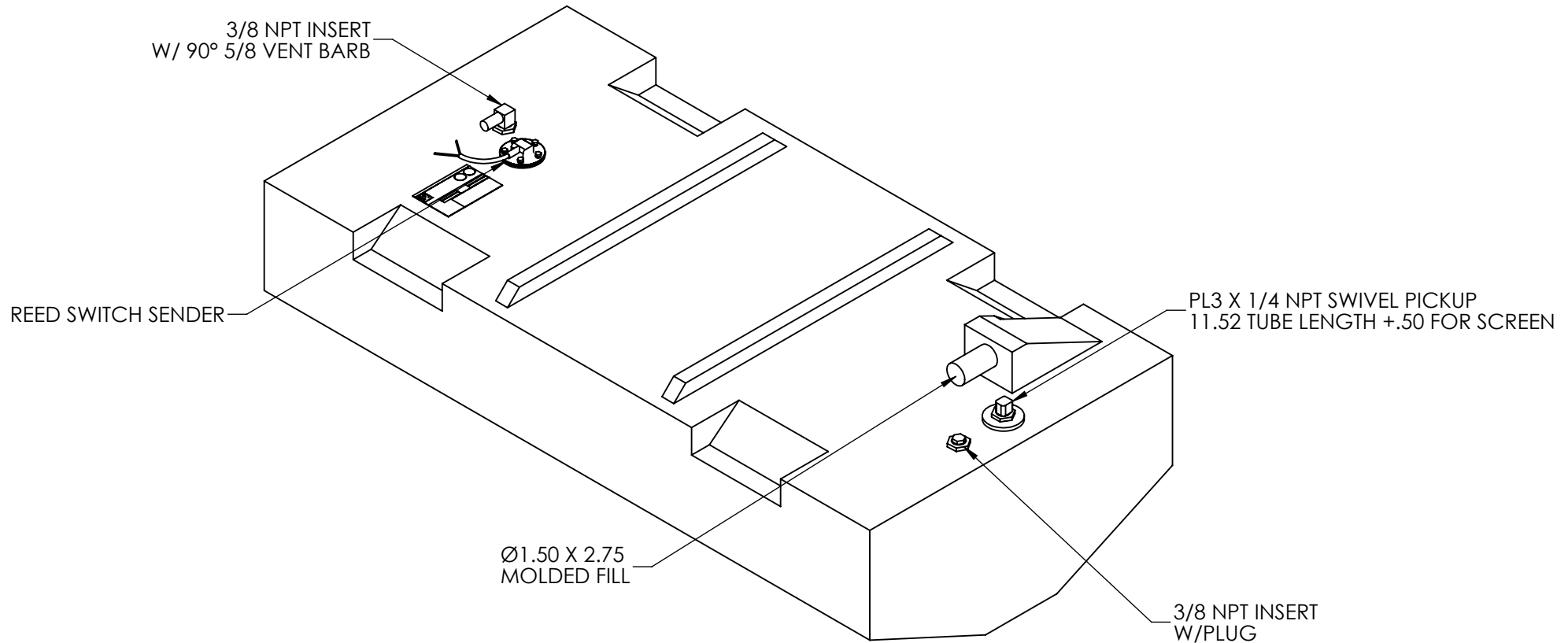


FUEL TANK INSTALLATION MUST ALLOW 3% GROWTH IN ALL DIRECTIONS. ANY DESIGNS NOT COMPLIANT WITH ABYC STANDARDS OR ARE CONSIDERED "GREY AREA" UNDER THESE STANDARDS WILL BE NOTED HERE IN. THIS PRINT AND ANY ATTACHED ARE PREPARED FOR CUSTOMER APPROVAL, PERFORMING THIS ACTION RELIEVES MOELLER MARINE PRODUCTS OF LIABILITY ASSOCIATED WITH TANK DESIGN.

REVISIONS			
REV.	DESCRIPTION	DATE	DRAFTER
1	MAKE DOGHOUSE 1.00" WIDER	12/19/07	
2	REPLACE ALUM. FILL W/ Ø1.50 X 2.75 MOLDED FILL	11/18/08	
3	ADD 3/8 NPT INSERT W/ PLUG	5/3/10	
3a	REVISED LABEL	3/7/2017	KBN



PAGE 1 OF 6

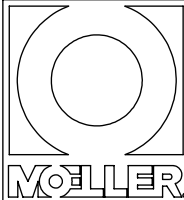
NOTE: ALL EDGES R0.38
UNLESS OTHERWISE NOTED
330 SHOT BLAST SURFACE TEXTURE
1° DRAFT ON ALL EXTERIOR SURFACES AS NEEDED

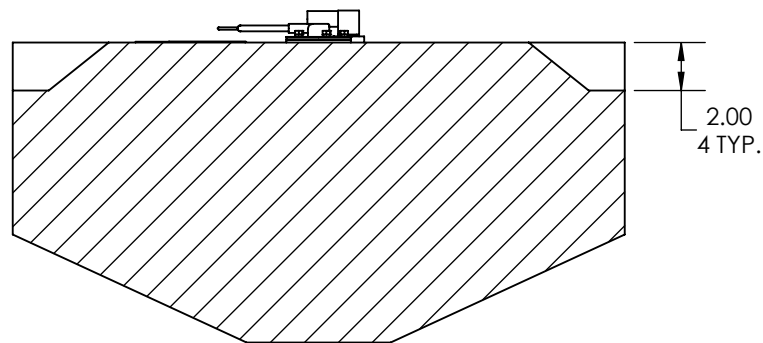
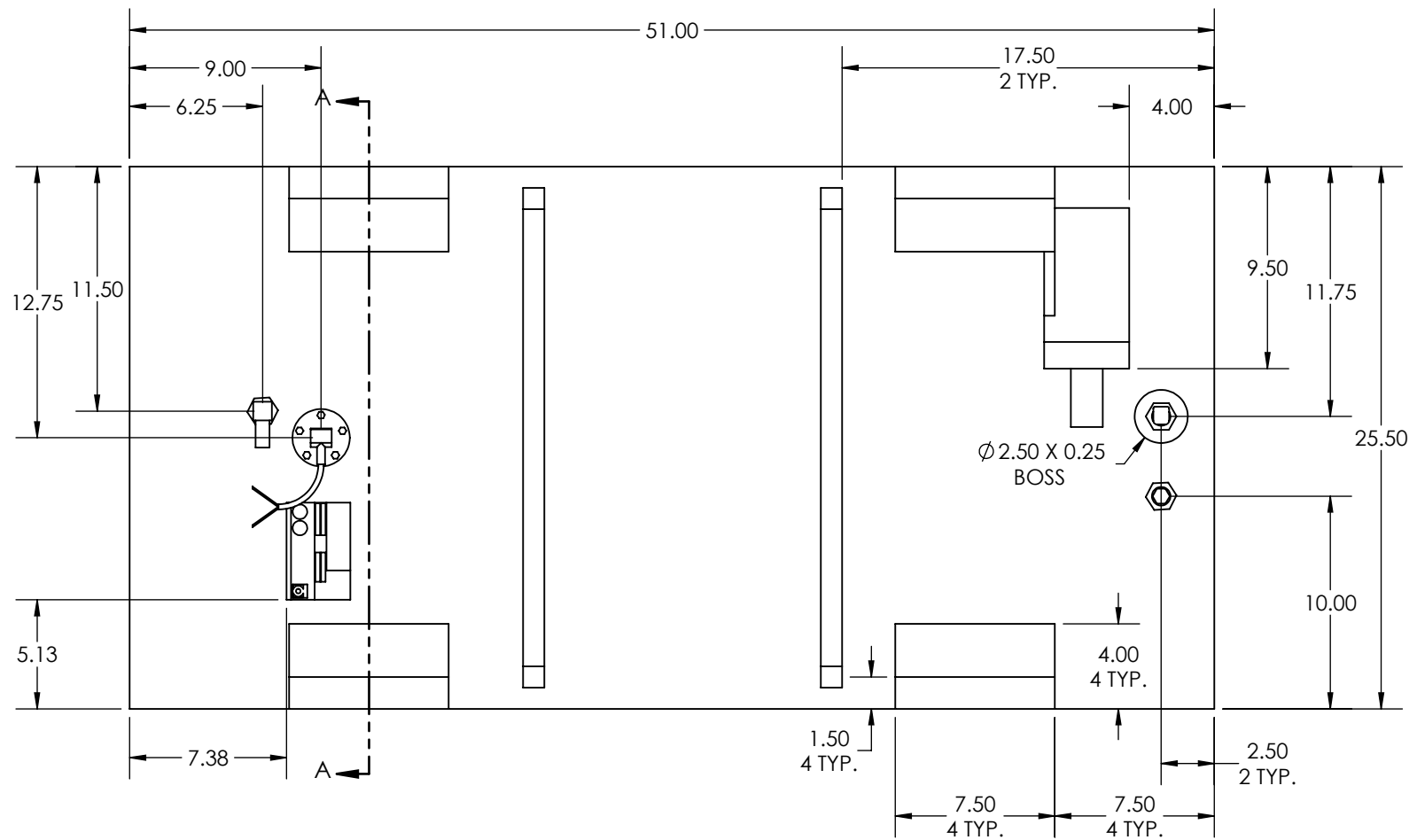
© 2017 MOELLER MARINE PRODUCTS
ALL RIGHT RESERVED

THIS DRAWING AND THE ATTACHED DRAWINGS (AND THE DATA SHOWN THERON) IS CONFIDENTIAL AND PROPRIETARY AND SHALL NOT BE USED, DISCLOSED TO OTHERS, REPRODUCED FOR ANY PURPOSE EXCEPT FOR QUOTATION TO OR ORDER BY MOELLER MARINE PRODUCTS, INC. AND/OR IT'S SUBSIDIARIES WITHOUT THEIR WRITTEN CONSENT TO THE USE OF SUCH DRAWINGS AND/OR DATA.

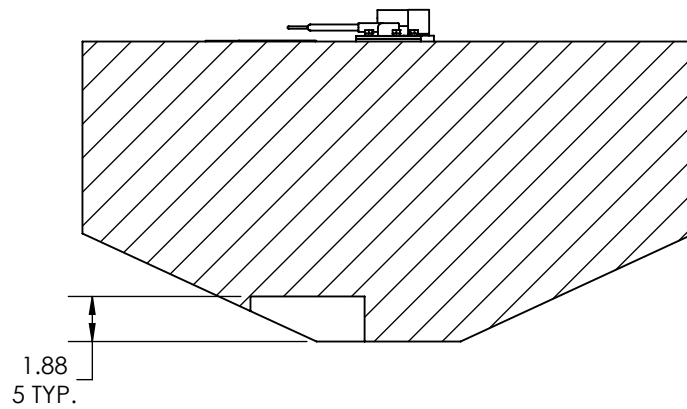
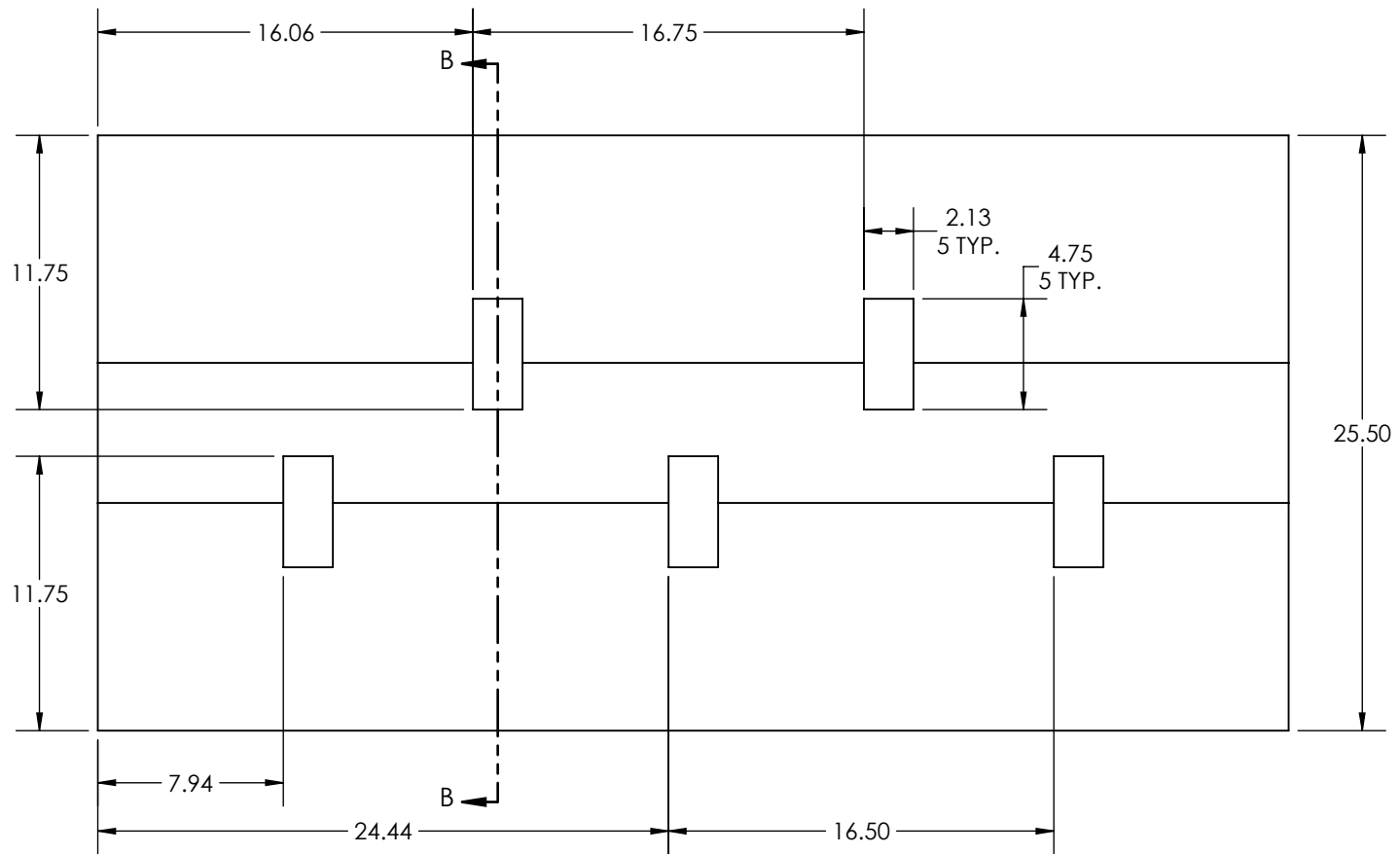
MOELLER MARINE
MAX FILL HEIGHT 1.9 METERS



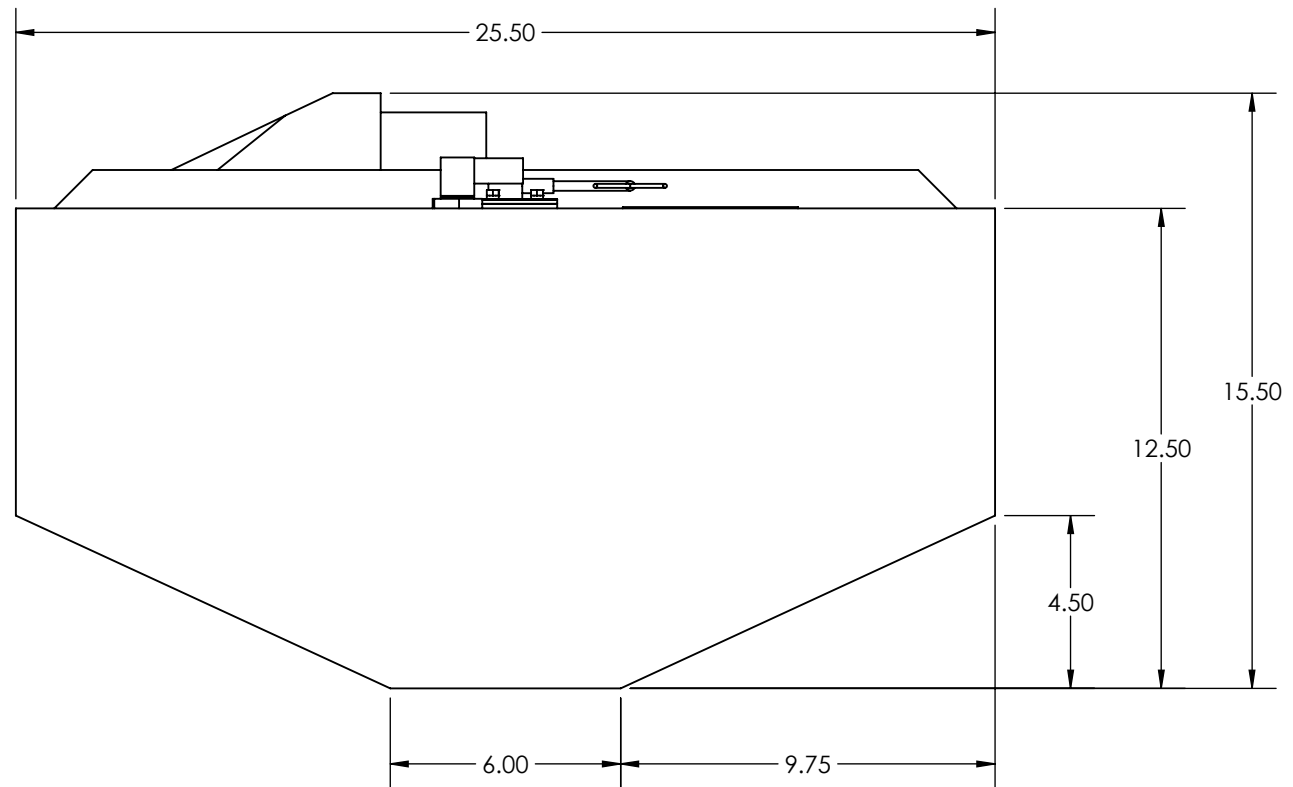
	DESCRIPTION	≤55 GALLON FUEL TANK (208 L) (032555-1)		
	PART #	FT5599	COLOR	NATURAL
	MATERIAL	CROSSLINK POLYETHYLENE		
	TOLERANCES	±1.5 % UNLESS OTHERWISE NOTED		
	WALL THK.	0.235" NOMINAL	DATE	5/3/10
DRAWN BY		MOELLER ENGINEERING		

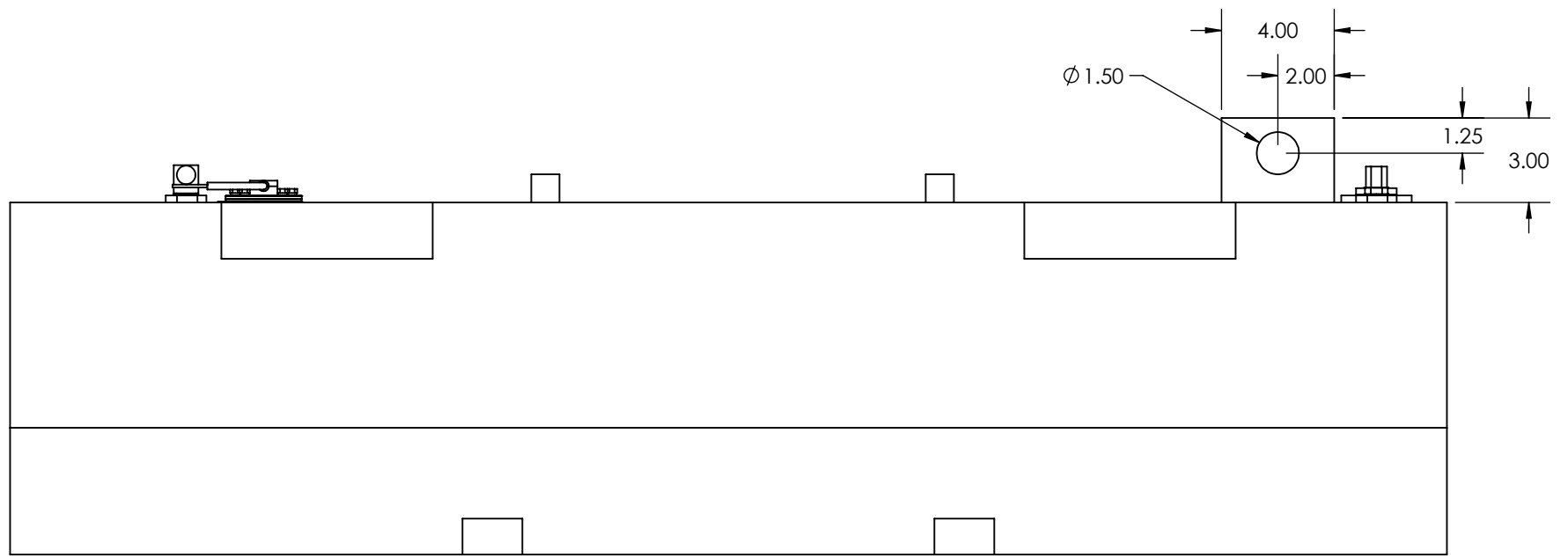


SECTION A-A




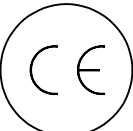

SECTION B-B





REFERENCE ONLY

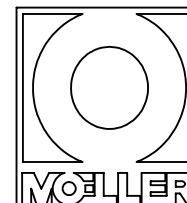
NOTE: CAPACITY, WALL THICKNESS AND MODEL NUMBER
WILL BE SPECIFIED ON PRINT FOR EACH TANK

3.00	4.56	FOR MARINE USE ONLY	
			Moeller Marine Products 801 North Spring Street Sparta Tennessee 38583 USA
			
		This tank has been tested under 33CFR 183.510(a). ISO 21487 Max. Test Pressure 3 PSI / 20 kPa. Max. Exposure Temp: 74C / 165F	
		Capacity Gals./ L	Material Crosslink poly
		Wall Thk. in.	Model No.
		Recommended for Gasoline 	Max. Fill Height: M.
		Date Mfg. / Ser. # 	

INTERNATIONAL GAS ONLY
XPLE ONLY NO BARRIER
NO DIURNAL

© 2015 MOELLER MARINE PRODUCTS
ALL RIGHT RESERVED

THIS DRAWING AND THE ATTACHED DRAWINGS (AND THE DATA SHOWN THERON) IS CONFIDENTIAL AND PROPRIETARY AND SHALL NOT BE USED, DISCLOSED TO OTHERS, REPRODUCED FOR ANY PURPOSE EXCEPT FOR QUOTATION TO OR ORDER BY MOELLER MARINE PRODUCTS, INC. AND/OR IT'S SUBSIDIARIES WITHOUT THEIR WRITTEN CONSENT TO THE USE OF SUCH DRAWINGS AND/OR DATA.



DESCRIPTION	INTERNATIONAL GAS ONLY			
PART #	A002051	COLOR	N/A	
MATERIAL	-			
TOLERANCES	2 PLACE	± 0.03	ANGULAR	± 1°
	3 PLACE	± 0.015	HOLES	± 0.005
DRAWN BY	MOELLER ENGINEERING		DATE	5-28-15

Last saved by: knewport 5/9/2017 8:16:12 AM